

DA4S



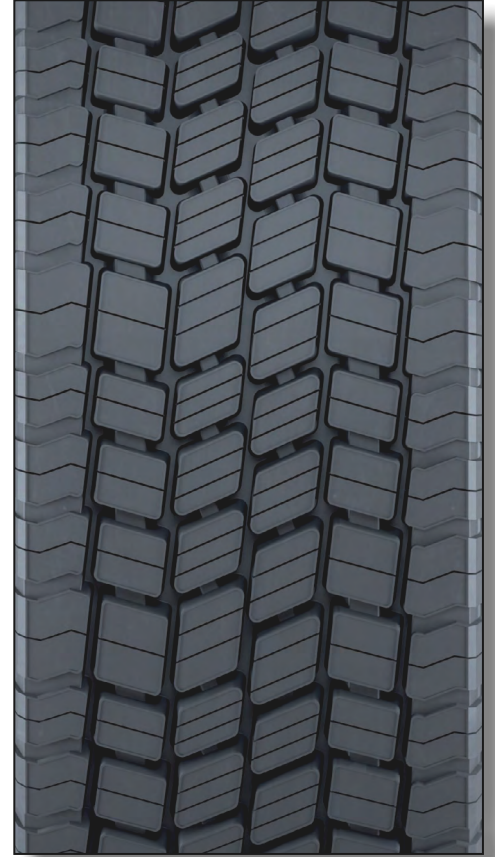
Einsatz Spezialprofil für die Hinterachse von Reisebussen mit 2-Stufenprofil für Winter und Sommer. Zur Erzielung optimaler Leistung im Herbst montieren. (M+S Kennzeichnung)



Characteristics Special tread design for drive axles of long distance buses. A two step tread pattern for winter and summer. To achieve best possible mileage tyre should be fitted in autumn. (incl. indication M+S)

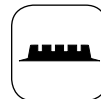
Características Diseño especial para ejes motrices de autobuses de largo recorrido. Un dibujo a dos niveles para invierno y verano. Para conseguir el máximo kilometraje deben montarse en otoño. (indicación barro y nieve = M+S)

Caratteristiche Battistrada di disegno particolare, indicato per assi trazione ed autobus gran turismo. Prodotto a due impieghi inverno-estate. Per raggiungere i massimi risultati chilometrici, i pneumatici devono essere montati in autunno. (indicazione fango e neve = M+S)

Propriétés Bandes avec ailettes pour l'essieu moteur des autocars avec un dessin spécial à deux échelons. Nous conseillons le montage à l'automne pour un rendement optimal. (indication neige-boue = M+S)



 mm	 mm
230/260	17,0
240/270	17,0
250/280	17,0



★★★★★	★★★★☆	★★★★★	★★★★☆	★★☆☆☆	★★☆☆☆	★★★★☆